



C. E. Shepherd Company

2221 Canada Dry Street  
Houston, Texas 77023 USA

713.924.4300

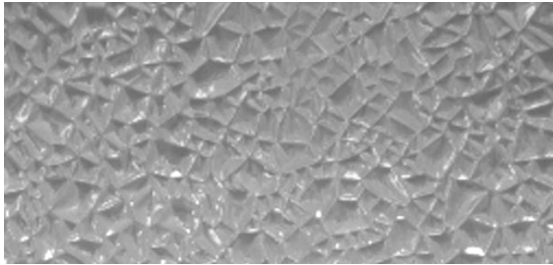
[www.ceshepherd.com](http://www.ceshepherd.com)

[sales@ceshepherd.com](mailto:sales@ceshepherd.com)

[intlsales@ceshepherd.com](mailto:intlsales@ceshepherd.com)

## CRACKED ICE PATTERN

92 Gauge Embossed Polyester Film



**Product Use:** Cracked Ice is commonly used to provide texture in fiberglass reinforced panels, interstitial material for air evacuation or liquid propagation.

**Product Description:** Pattern of asymmetric relief provides deep texture with excellent overall uniformity.

TYPICAL VALUE				
	PROPERTY	ENGLISH	METRIC	TEST METHOD
<b>OPTICAL</b>	TLT	87.0%	87.0%	ASTM D1003
	C. O. F. (dynamic) A-B	0.4	0.4	ASTM D1894
<b>PHYSICAL</b>	Elongation at Break MD	160%	160%	ASTM D882A
	Elongation at Break TD	100%	100%	ASTM D882A
	Tensile Strength MD	29,000 psi	200 MPa	ASTM D882A
	Tensile Strength TD	37,000 psi	255 MPa	ASTM D882A
	Yield Strength MD	14,500 psi	100 MPa	ASTM D882A
	Yield Strength TD	14,400 psi	99 MPa	ASTM D882A
<b>THERMAL</b>	Shrinkage MD (374°F/190°C)	3.50%	3.50%	unrestrained @ 374°F/190°C for 5 minutes
	Shrinkage TD (374°F/190°C)	2.30%	2.30%	unrestrained @ 374°F/190°C for 5 minutes

CUSTOM ORDER PROPERTIES		
WIDTH	LENGTH	WEIGHT
Can be manufactured in widths to 130"	Maximum roll length 4,500 lf	143 ft <sup>2</sup> per pound of film

Disclaimer: These values represent typical performance data for polyester DuPont Teijin™ film\*; they are not intended to be used as design data. C. E. Shepherd Company believes this to be the most accurate information currently available however we make no guarantee of results and assume no liability whatsoever in connection with this information. This document is not a license to operate under, or intended to suggest infringement of, any existing patents.

\* Test data provided by DuPont Teijin™ Films.



C. E. Shepherd Company

2221 Canada Dry Street  
Houston, Texas 77023 USA

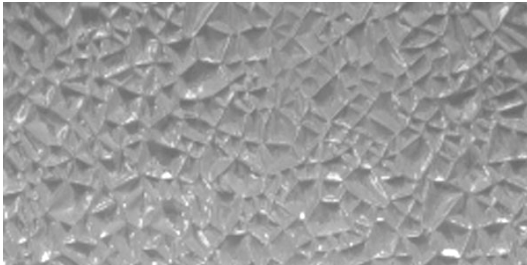
713.924.4300

[www.ceshepherd.com](http://www.ceshepherd.com)

[sales@ceshepherd.com](mailto:sales@ceshepherd.com)

[intlsales@ceshepherd.com](mailto:intlsales@ceshepherd.com)

## CRACKED ICE PATTERN



142 Gauge Embossed Polyester Film

**Product Use:** Cracked Ice is commonly used to provide texture in fiberglass reinforced panels, interstitial material for air evacuation or liquid propagation.

**Product Description:** Pattern of asymmetric relief provides deep texture with excellent overall uniformity.

TYPICAL VALUE				
	PROPERTY	ENGLISH	METRIC	TEST METHOD
<b>OPTICAL</b>	TLT	86.5%	86.5%	ASTM D1003
<b>PHYSICAL</b>	C. O. F. (dynamic) A-B	0.4	0.4	ASTM D1894
	Elongation at Break MD	160%	160%	ASTM D882A
	Elongation at Break TD	100%	100%	ASTM D882A
	Tensile Strength MD	29,000 psi	200 MPa	ASTM D882A
	Tensile Strength TD	37,000 psi	255 MPa	ASTM D882A
	Yield Strength MD	14,500 psi	100 MPa	ASTM D882A
	Yield Strength TD	14,500 psi	99 MPa	ASTM D882A
<b>THERMAL</b>	Shrinkage MD (374°F/190°C)	2.50%	2.50%	unrestrained @ 374°F/190°C for 5 minutes
	Shrinkage TD (374°F/190°C)	0.50%	0.50%	unrestrained @ 374°F/190°C for 5 minutes

CUSTOM ORDER PROPERTIES		
WIDTH	LENGTH	WEIGHT
Can be manufactured in widths to 130"	Maximum roll length 4,500 lf	143 ft <sup>2</sup> per pound of film

Disclaimer: These values represent typical performance data for polyester DuPont Teijin™ film\*; they are not intended to be used as design data. C. E. Shepherd Company believes this to be the most accurate information currently available however we make no guarantee of results and assume no liability whatsoever in connection with this information. This document is not a license to operate under, or intended to suggest infringement of, any existing patents.

\* Test data provided by DuPont Teijin™ Films.